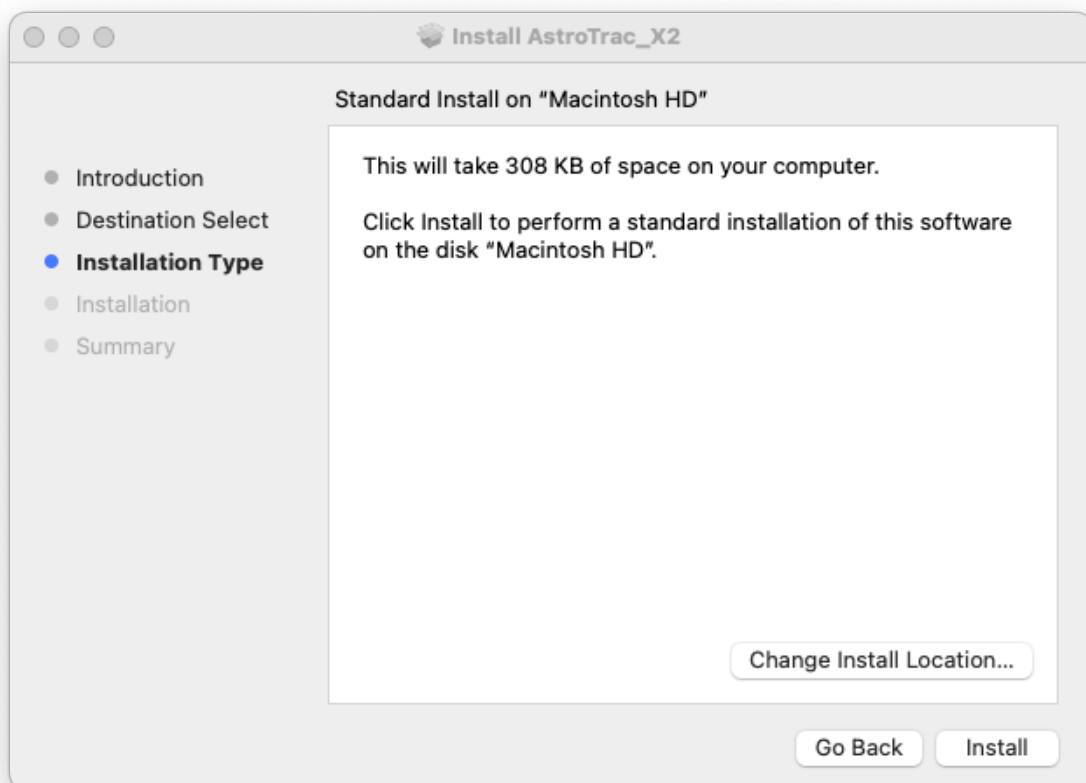


Installing and Running TheSkyX AstroTrac 360 X2 Plugin

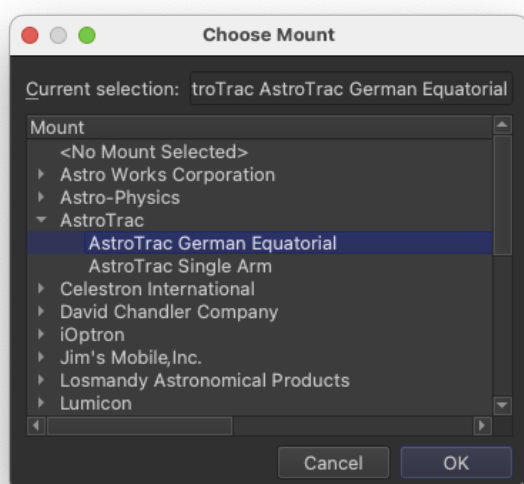
Download and Installation

The X2 plugin for the AstroTrac360 mount is available for all the platforms supported by The Sky X. They can be downloaded from Rodolphe Pineau's site [here](#).

These packages have installers that are specific for each platform. They will each install the plugins in the correct place – but you will need to have run The Sky X at least once for the installer to work out where to place the files. An example for the Mac is shown below.



Selecting AstroTrac plug in and Configuration

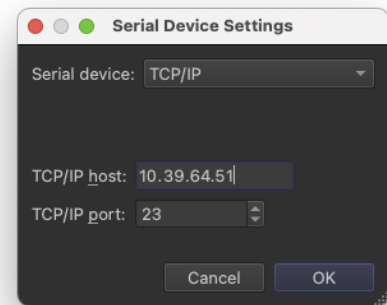


Select a mount as normal in The Sky X. Click on “Mount Setup”, select “Choose...” and you will see listed as a selection.

Click on the arrow to the left of AstroTrac and the list of mounts will expand. Select the correct configuration – equatorial or single

arm, depending on your set up and click “OK”.

Once you have selected the mount, click on “Settings...” and from the drop down list of serial devices, choose “TCP/IP”. Enter the IP address of your RA drive as the host and set the TCP/IP port to 23 – **IMPORTANT: It must be the RA drive, not the DEC drive.**

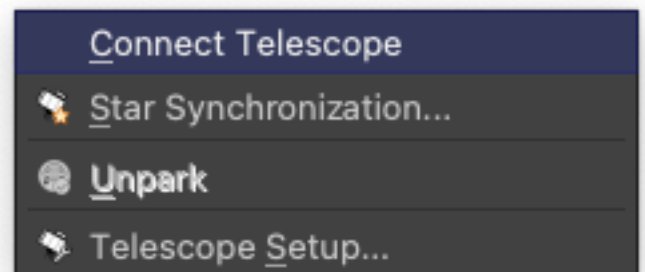
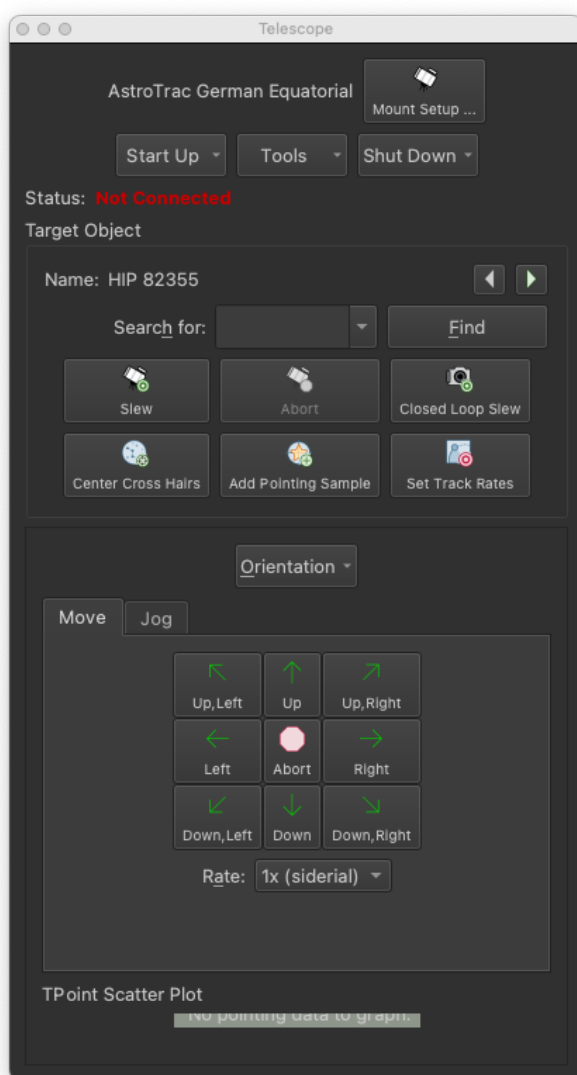


Connecting to the Mount

Before turning the mount on, put the mount in its natural home position: the RA drive pointing straight down and with the telescope pointing towards the North or South Celestial Pole. The plug in assumes that the mount starts in this position. You do not have to be exact – it is possible to sync the position later.

Polar align the mount as normal and ensure that the mount is powered on. Connect your computer's wifi to the wifi network created by your RA drive – in the mount illustrated above it will be [AstroTrac360:RA:10.39.64.51](#).

Once your wifi is connected, you can connect the mount in The Sky X.



On the telescope control panel, illustrated to the left, select “[Connect Telescope](#)” from the drop down “[Start up](#)” menu. If successful, the status will flash and the status will most likely be set to “[Tracking at Sidereal Rate](#)”.

You can now use the mount as normal inside TSX – slew, sync, create Tpoint models etc.

Note that if guiding, you must use an ST4 cable and set the autoguider in The Sky X to use relays. It is currently not possible to programme 3rd party plugins to use pulseguiding.

Enjoy!